



## ***4" Stainless Tapered Seat Emergency Valve – External Air – 90 Degree Elbow***

- Air Operated
- Stainless Trim
- Teflon Encapsulated Seals

Betts Stainless Steel Emergency Valves are equipped with Teflon encapsulated O-ring seals which are compatible with a wide range of products. The tapered seat is self-cleaning to lessen the possibility of seat damage due to foreign objects. The stuffing box features two O-ring seals to provide positive sealing.

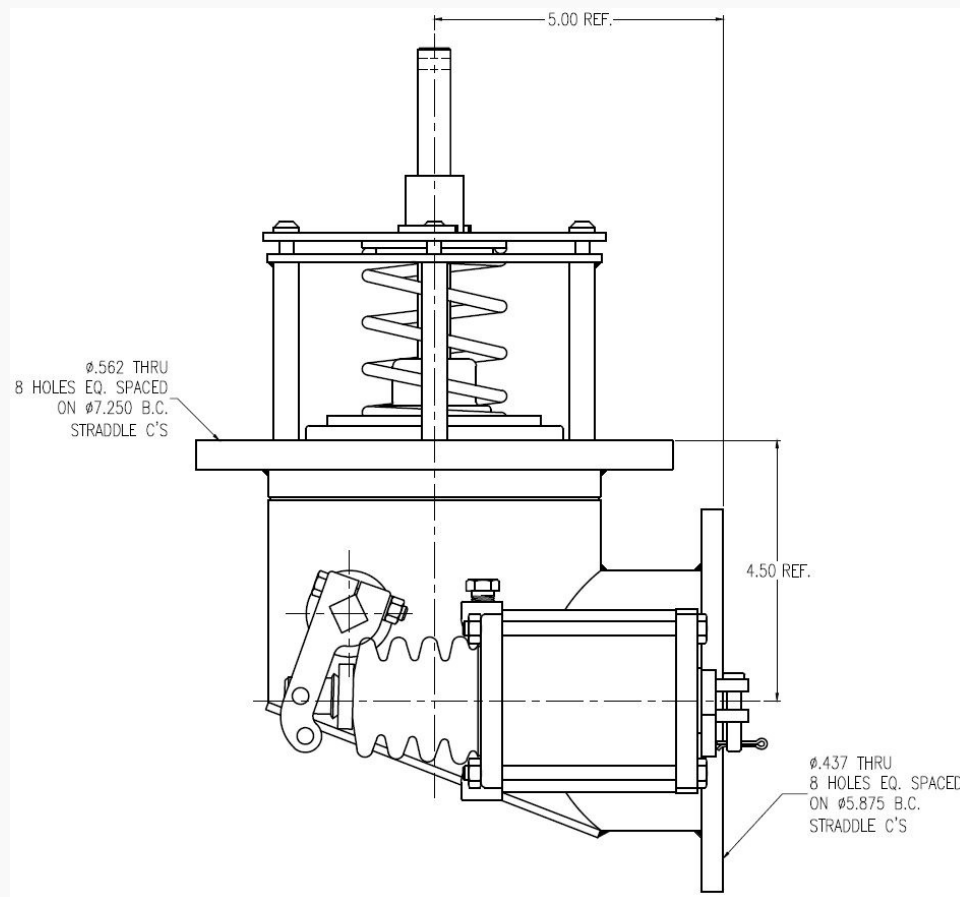
Air operated valves are provided with an external air cylinder to help prevent gasoline or other products from contaminating the air supply. The air cylinder is hard-coated aluminum with a polished stainless steel shaft. Cylinders have 1/8" NPT port for air connection and are supplied with a fusible plug installed.

Left-hand valves are available with air cylinder or cable lever arm on opposite side of valve as shown at right. Add suffix -005 for left-hand option. Add suffix -004 for optional screen.

Assembly Number	Outlet	Wt.	Dimensions	Inlet Flange	Outlet Flange
EV46227SSTS	4" Flanged	26.5lbs	A: 4.50" B: 5.00"	B.C.: 7.25" Holes: 8-9/16	B.C.: 5.88" Holes: 8-7/16

Force rating from TTMA RP86: 4" Valves Fb-max=35,100 lb.

**CAUTION:** Never bottom load through emergency valves without first opening valve. Failure to do so may result in damage to the tank and/or valve.



Replacement Air Actuator (Cylinder)

**EB-01-12:** Water Flow Rates of Betts Emergency Valves

**EB3-00:** MAWP and Bursting Pressure Ratings for Betts Valves

**EB1-03:** Air Emergency Valve System

**EB4-02:** Emergency Valve Straight Lift Mechanism